



Ysgol Heol Goffa

Prospectus 2025 – 2026

Ysgol Heol Goffa, Heol Goffa, Llanelli, Carmarthenshire SA15 3LS

Telephone: 01554 75946

Email: admin@heolgoffa.ysgolccc.cymru

Website: www.ysgolheolgoffa.ysgolccc.cymru



Pawb Yn Gallu – Everyone Can!



CROESO I / WELCOME TO YSGOL HEOL GOFFA

1st September 2025

Dear Parents, Carers, and Members of Our School Community,

Thank you for taking the time to learn more about Ysgol Heol Goffa. We are proud to be a school that offers a truly personalised curriculum, designed to meet the individual needs of every learner through engaging activities and meaningful opportunities. Our focus is on helping each child make excellent progress and develop the skills and confidence they need for life beyond school.

Strong partnerships with parents, professionals, and our wider community are at the heart of what we do. These connections ensure that our pupils receive the very best educational experiences and the most relevant opportunities to build independence and life skills. We are committed to providing a safe, calm, and happy environment where every child feels valued and looks forward to coming to school.

To stay informed about school news, events, and activities, please make sure you are connected with us through Class Dojo and Facebook. If you have any questions or need further information, please do not hesitate to contact us—we are always here to help.

Warm regards,

Miss Ceri Hopkins
Headteacher

Our Mission Statement

At Ysgol Heol Goffa our values underpin everything we do. We encourage each other to become independent, ambitious individuals who are confident, creative and capable. We reach for the stars to fulfil our potential.



Our School

Ysgol Heol Goffa is a special school for pupils aged 3 – 19 years located in Llanelli, Carmarthenshire where we provide exciting and bespoke learning opportunities in a nurturing and caring environment.

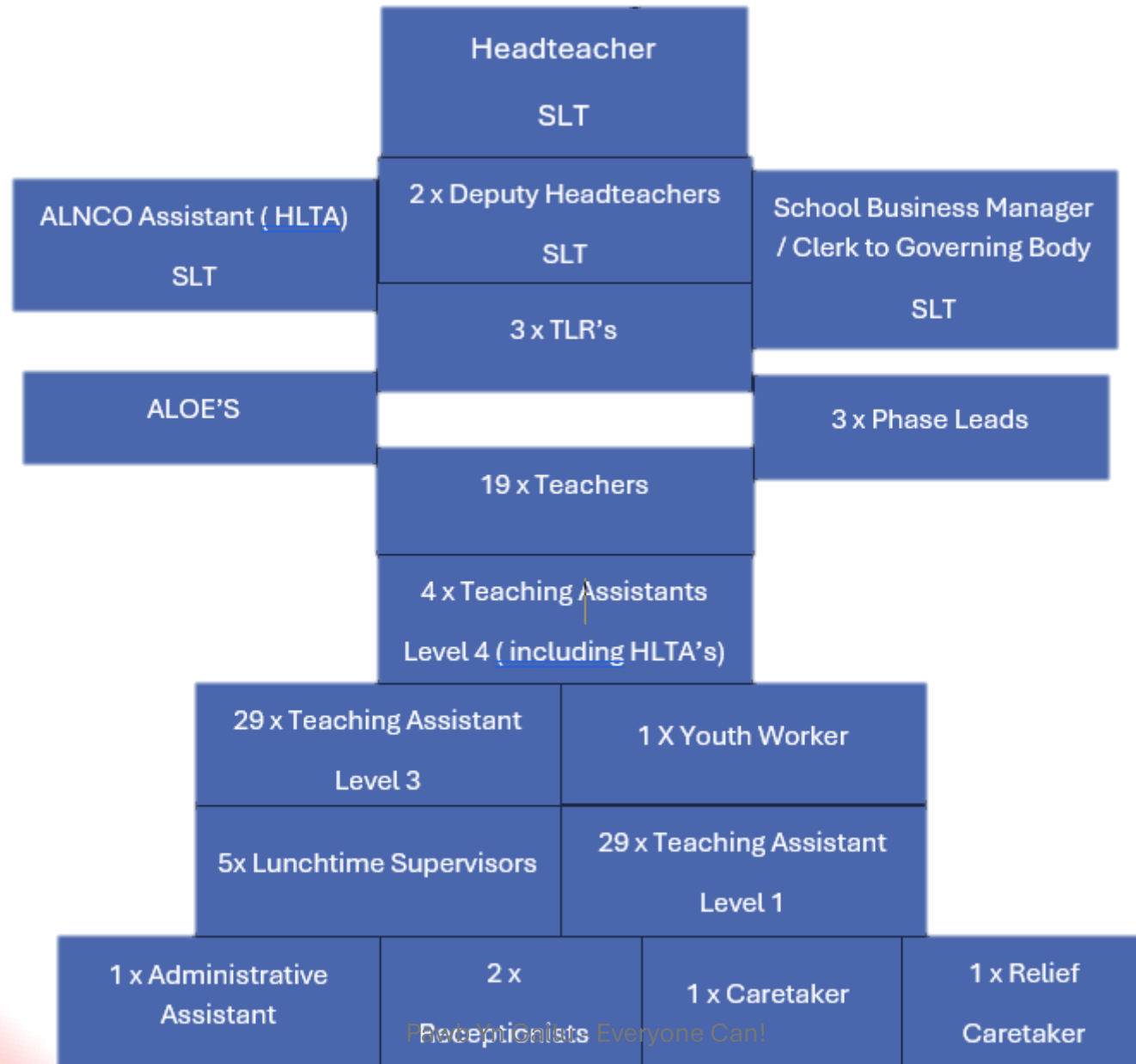
We aim to enable and upskill our pupils to become as independent, self-advocating and happy as possible, during their time at school, in the community, and beyond.

Our wonderful learners have a range of abilities and needs including severe, profound and multiple additional learning needs.

The pupil is placed at the heart of all we do and we are proud of the power of pupil voice at Ysgol Heol Goffa.

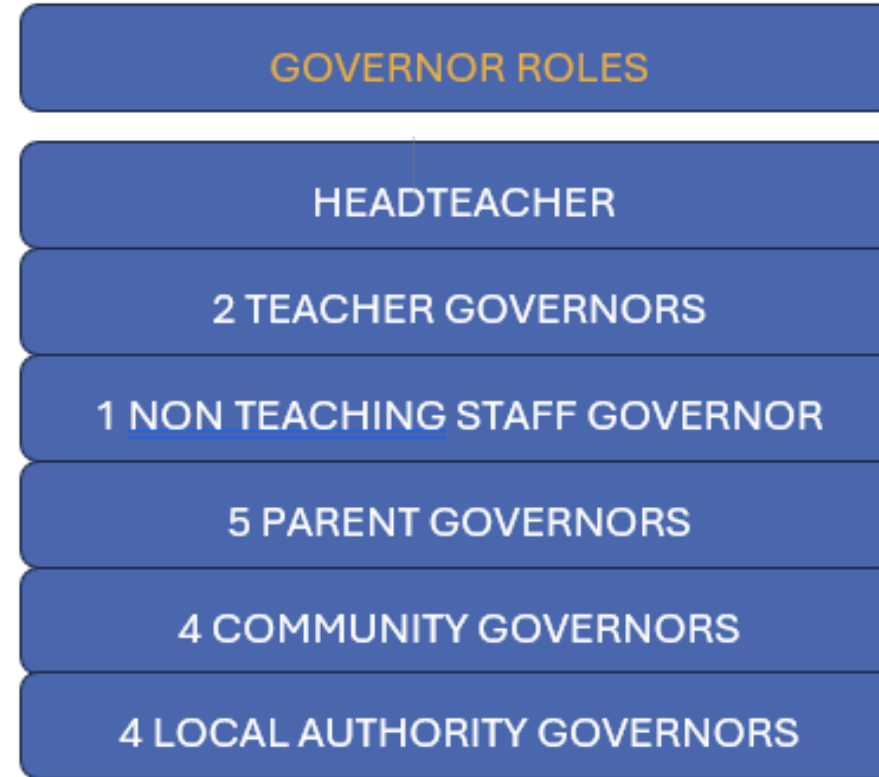


Staffing Structure



For an up-to-date list of staff please visit the school website:
[Ysgol Heol Goffa – Who's who?](#)

Governing Body



The Governing Body plays a vital role in shaping the future of our school. Governors meet once each term to discuss key matters and ensure the school continues to thrive. In addition, specialist committees—covering finance, premises, staffing, and curriculum—meet regularly to focus on specific areas. Our governors generously volunteer their time, not only for meetings but also for training that helps them fulfil their responsibilities effectively. They make regular visits to the school to stay connected with our community and understand the day-to-day life of our pupils and staff.

What Do Governors Do?

The Governing Body has a collective legal responsibility for the school's overall direction and strategic management. This includes:

- Overseeing the school's delegated budget.
- Ensuring financial resources are used efficiently to support teaching and learning.
- Driving improvements that enhance outcomes for all pupils.

Through their commitment and expertise, our governors help ensure that every decision supports the best possible education for our children.

Please visit the following link for a list of our current school Governors: [Ysgol Heol Goffa - Governors](#)

Our current **Chair of Governors is Mr Owen Jenkins**; he can be contacted via the Clerk to Governors; Helen Jones by email; helen.jones@heolgoffa.ysgolccc.cymru or 01554 759465.

Please visit the school website for the following information:

Governors Annual Report to Parents: [Ysgol Heol Goffa - Governor Reports & Information](#)

School Policies: [Ysgol Heol Goffa - Policies](#)

How can parent / carers petition the Governing Body for a meeting?

[statutory-guidance-to-the-governing-bodies-of-maintained-schools-in-wales-regarding-the-duty-to-hold-meetings-with-parents.pdf](#)

For more information on Governing Bodies, please visit:

[School Governors' guide to the law | GOV.WALES](#)

Finance

School Fund

The school has its own Fund which is used to acquire equipment or resources not afforded by the school's annual Capitation Allowance. Proceeds from School Concerts, events, various activities along with donations made to the school are paid into the School Fund.

Schools Essentials Grant

From Reception age, children can also apply for the schools essential Grant which can provide up to £125 to help with school Costs such as uniform, PE kits, trips etc.

For more information please visit:

[School Essentials \(PDG Access\) - Carmarthenshire County Council](#)

Charging and Remissions Policy

We do not charge pupils and parents for activities that take place during the school day. However, parents may be asked to contribute towards certain events and school visits.

Equal Opportunities

The school has an Equal Opportunities Policy in which all pupils are given the same opportunities and have the same rights regardless of disability, colour, race or belief.

Complaints

The Education Reform Act requires that each LEA must make provision for considering any complaints regarding the School Curriculum and related matters. Parents are invited to bring any complaints or questions to the Headteacher in the first instance. Hopefully the matter can be dealt with to everyone's satisfaction at that point. However, should parents feel dissatisfied and wish to make the complaint formal, the authority has established procedures which are available for consultation at the school:

Chair of Governors

Mr. Owen Jenkins
Ysgol Heol Goffa
Heol Goffa
Llanelli
Carmarthenshire
SA15 3LS

Clerk to Governors

Miss Helen Jones
Ysgol Heol Goffa
Heol Goffa
Llanelli
Carmarthenshire
SA15 3LS

Email: helen.jones@heolgoffa.ysgolccc.cymru

Admissions Procedure

Admissions are negotiated between the school, the LA and parents for children or young people who have an Individual Development Plan (IDP) where the primary need will be Severe Learning Difficulties and/or Profound and Multiple Learning Difficulties. A recommendation for admission to Ysgol Heol Goffa may be made. The local authorities Family Liaison Officer (FLO) will arrange a meeting for the family and pupil to visit Ysgol Heol Goffa. This enables the parents and pupils to make an informed choice into the education setting. If Ysgol Heol Goffa is the agreed place, then the local Education Authority will then confirm with parents when a place is available for their child, and an admission date will be agreed with the Headteacher.

In the term prior to starting, a timetable of transition will take place. Visits to the child's current setting, admissions meetings with professionals and family, and a series of transition sessions and days will take place at Ysgol Heol Goffa to ensure a smooth and successful transition into the pupil's new school.

For further information on Admissions please view our policy on our school website:

[Ysgol Heol Goffa - Policies](#)

If you wish to arrange a visit to our school, please contact the ALN Department at Carmarthenshire County Council on telephone number 01257 246455 or email, ALNQueries@carmarthenshire.gov.uk.



Additional Learning Needs Act Information

Additional Learning Needs and Education Tribunal (Wales) Act

Factsheet 5



Llywodraeth Cymru
Welsh Government

A 0–25 age range

There will be a single legislative system relating to the support given to children and young people aged 0 to 25 years who have additional learning needs (ALN) and are receiving education and/or training.

Welsh language

If a child or young person needs ALP in Welsh, this must be documented in the IDP and 'all reasonable steps' must be taken to secure the provision in Welsh.

A mandatory ALN Code

The ALN Code will ensure the new ALN system has a set of clear, legally enforceable parameters within which local authorities and governing bodies that are responsible for supporting children and young people with ALN must act.

Clear and consistent rights of appeal

All children, their parents/carers and young people up to the age of 25 will have the right to appeal to the Education Tribunal against decisions made by a local authority or further education institute (FEI) in relation to their ALN or their IDP.

Children and young people must be provided with access to independent advocacy services.

A unified plan

Individual development plans (IDPs) will replace the existing variety of statutory and non-statutory plans for learners of compulsory school age and below, as well as for those learners over compulsory school age in school or further education.

This will ensure consistency and continuity, and that provision and rights are protected regardless of the severity or complexity of needs.

Increased participation of children and young people

Children, their parents/carers and young people will be supported to understand and participate in the decisions which are taken that affect them, provided with appropriate reassurance, and offered opportunities to raise concerns and have their questions answered.

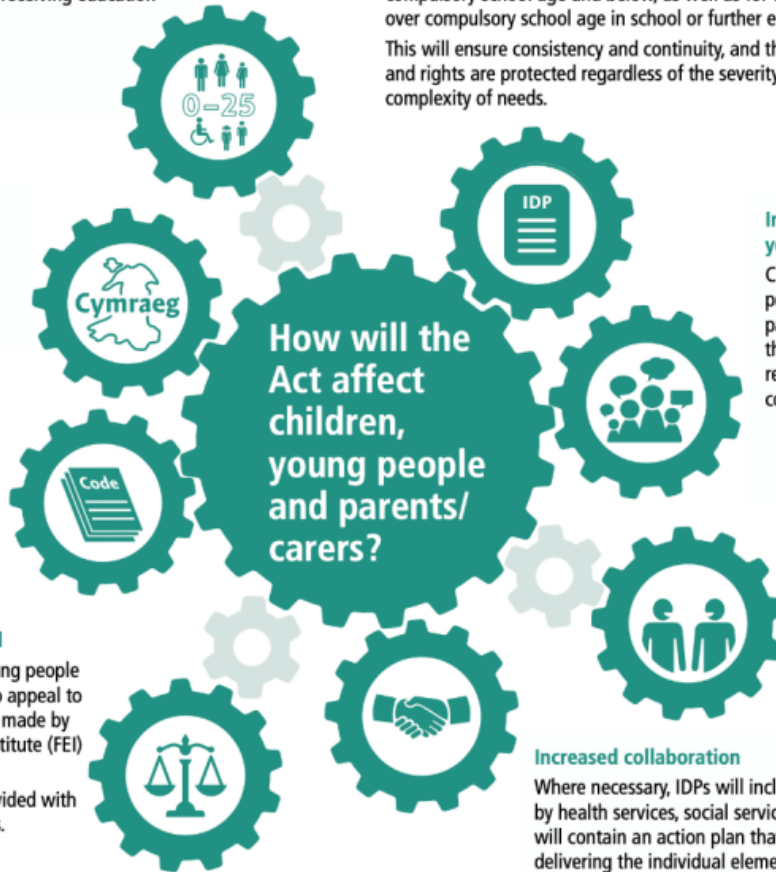
Avoiding disagreements and earlier disagreement resolution

If a child, their parents/carers or a young person is not happy with decisions that have been made about their ALN or IDP by a school, they may request that a local authority reviews or reconsiders it.

Increased collaboration

Where necessary, IDPs will include additional learning provision (ALP) agreed by health services, social services and other services, as well as education. IDPs will contain an action plan that is clear about which agency is responsible for delivering the individual elements.

How will the Act affect children, young people and parents/carers?



For more information relating to this topic please visit:

[Additional Learning Needs - Carmarthenshire County Council](#)

Or contact them by telephone:

01257 246455 or email,

ALNQueries@carmarthenshire.gov.uk

School Hours

08.50am - 2.50pm

Transport

Pupils are transported to and from school via Carmarthenshire County Council's transport department. Requests for transport are made via this route. [School Transport - Carmarthenshire County Council](#)

We have three wheelchair accessible minibuses available to transport pupils to extra curricula activities, educational visits and residential visits.

Pawb Yn Gallu - Everyone Can!



School Meals

School meals are cooked on the premises daily and copies of the menu are available on the Carmarthenshire County Council website: [School meals - Carmarthenshire County Council](#)

Mealtime is very much part of the school day and is seen as a teaching and learning opportunity.

Some pupils are eligible for free school meals- please ask if you are unsure. Pupils who wish to bring a packed lunch, sit at the table with their class group and are included in the social and self-help training associated with mealtimes. We encourage Healthy Packed Lunches, for more information please visit: [healthy-eating-in-maintained-schools-statutory-guidance-for-local-authorities-and-governing-bodies.pdf](#)

Special dietary requirements can be catered for – please ask.

The cost of free school meals for all pupils can be found on the Carmarthenshire County Council website and payments can be made through ParentPay - [ParentPay - Leading Cashless Payment System for Schools](#)



Pawb Yn Gallu - Everyone Can!



Clothing

Pupils may wear an orange polo shirt with our School Logo. A navy-blue sweatshirt with our School Logo with either black or dark grey trousers or skirt.

Shoes

Pupils should wear sensible, safe shoes at all times of the year. Flip flops are deemed to be inappropriate and should not be worn.

We run an ECO Shop in school where we recycle our school uniform. Please check with the school for our latest stock availability.

If you wish to purchase our uniform this is available from:

PICTON SPORTS LIMITED

Heol Aur Dafen Industrial Estate

Llanelli

Carmathenshire

SA14 8QN

TEL: 01554 754662

www.pictonsports.co.uk

sales@pictonsports.co.uk

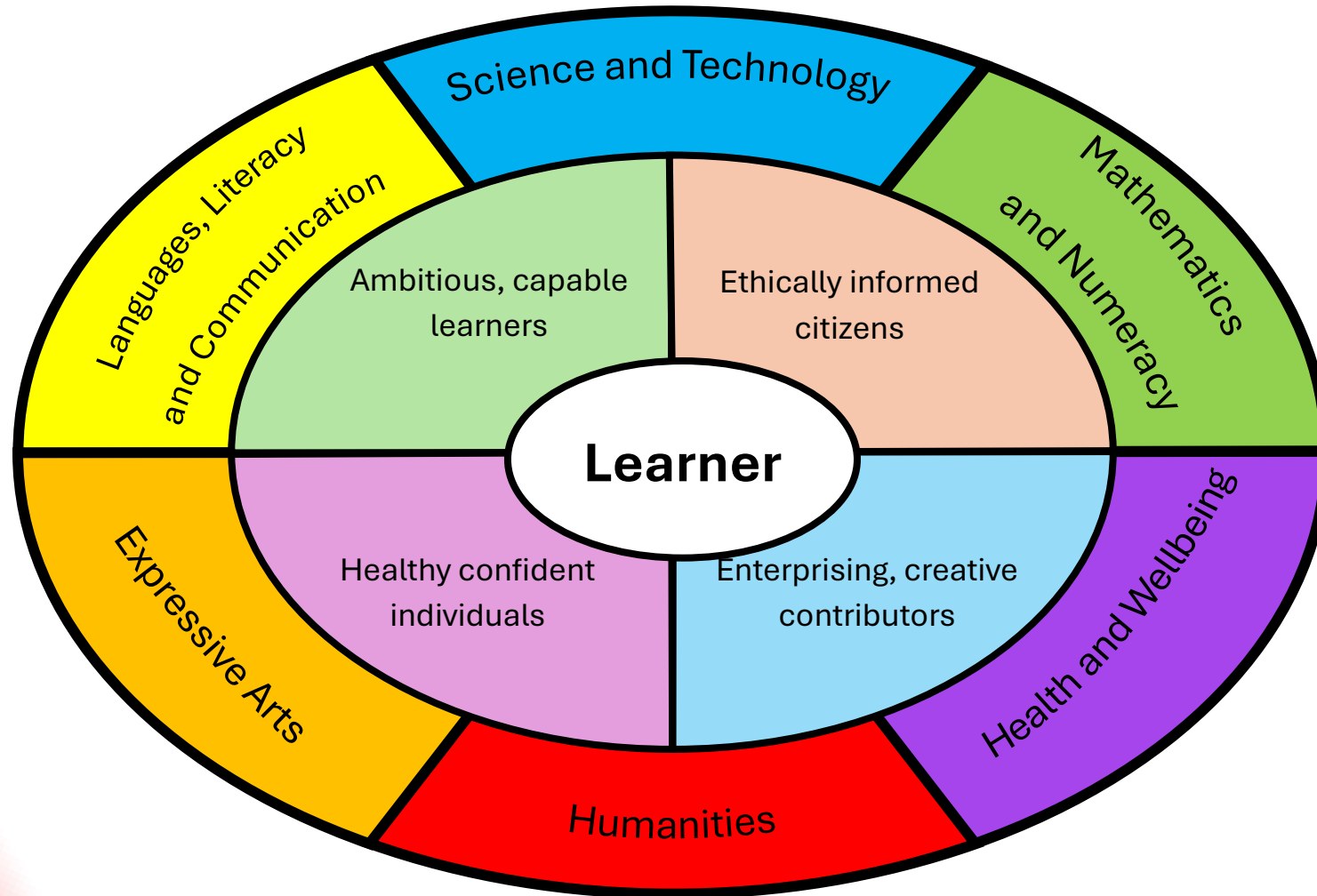
Jewellery

In the interest of health and safety (and in line with the school policy on the wearing of jewellery/health and safety) we ask parents not to send pupils into school wearing jewellery. Should parents not comply with this policy they must accept responsibility for any loss or injury caused by the wearing of jewellery. Staff will insist that pupils remove any jewellery during all sporting/PE activities, food technology, design technology and any other activity/lessons where they feel that the wearing of the jewellery may pose a hazard. If the jewellery cannot/will not be removed, then the pupil will not be allowed to participate in the activity in the interest of their well-being and the health and safety of others.



Curriculum

At Heol Goffa we are committed to providing a broad, balanced and relevant curriculum which is based on experiential learning.



Our Bees Albee, Elsee, Henree and Eddee ensure that the **Four Purposes** underpin all that we do.



ALBEE



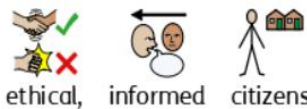
ambitious, capable learners



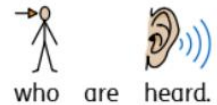
who reach for the stars.



ELSEE



ethical, informed citizens



who are heard.



HENREE



healthy, confident individuals



who feel good and think of others.



EDDEE



enterprising, creative contributors,



who show what they can do.

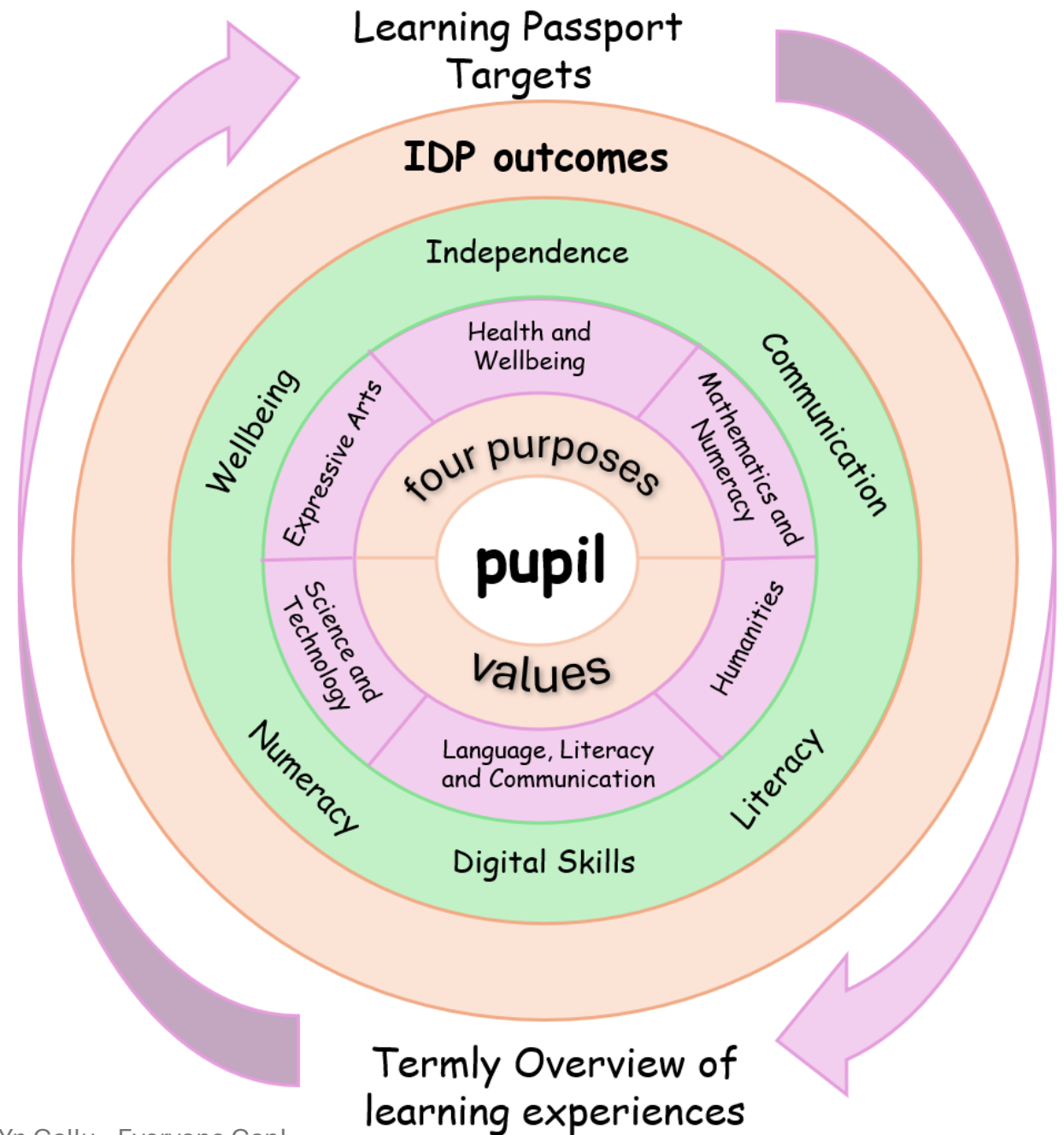


Pawb Yn Gallu - Everyone Can!

The Curriculum for Wales has allowed us to develop our own personal curriculum for Heol Goffa, enabling learners to develop towards the four Purposes across six areas of learning and experience. Each term you will be given a termly overview of what engaging learning experiences will take place.

We focus on developing the cross-curricular skills literacy, numeracy and digital skills alongside communication and wellbeing in all that we do, through purposely planned engaging experiences.

Progress towards these and IDP outcomes are shared throughout the year, via our learning passport targets on class dojo.



Safeguarding Children

At Ysgol Heol Goffa we promote the protection and welfare of all our children and consider this to be a priority. Ceri Hopkins, Head Teacher, Helen Ley and Frederica Cole Deputy Head Teachers are the Designated Senior Persons for Safeguarding. They can offer advice, guidance and training to all staff in these matters. The Chair of Governors is the nominated Governor with responsibility for safeguarding and child protection. They ensure that our policy is in place and that it complies with all legislation regarding child protection issues. If we believe a child to be in danger or has been harmed in any way, it is our duty to report the matter to the child protection team or the police immediately. We do not have any choice in the matter. The safety of our children is the most important factor in this school. If we should have any concerns regarding a child, then we would discuss and work with parents to resolve the matter. Having said that, it is possible under certain circumstances, that we may refer the matter to the child protection team first before we consult with parents. This can be a difficult situation, but we must put the child first. Any allegations made against the Headteacher should be referred to the Chair of Governors. The telephone number can be obtained from the main office or Clerk to Governors Helen Jones.

Safeguarding Procedure

Ysgol Heol Goffa is committed to safeguarding and promoting the welfare of children and young people. We expect all staff, governors, volunteers, and visitors to share this commitment.

Our safeguarding officers are:

Miss Ceri Hopkins Headteacher	Mrs Helen Ley Deputy Headteacher	Mrs Frederica Cole Deputy Headteacher	Mr Owen Jenkins Safeguarding Governor

What to do if you suspect abuse has happened or is likely to happen:

1. Listen to any disclosure carefully.
2. Stay calm, try not to show shock and reassure the pupil.
3. Don't prompt or seek more information than is **absolutely necessary**.
4. Don't make promises – tell pupil you will have to pass the information on.
5. Record carefully what has happened or been said.
6. Report your concern to a safeguarding officer as soon as possible.
7. Complete a 'My Concern' form and pass it on to CH, HL, FC or OJ.

Should you have additional safeguarding concerns please contact:
Mr. Owen Jenkins, Chair of Governors, please contact Clerk to Governors Helen Jones for his contact information, or contact The Central Referral Team on 01554 742322.

Governments should make sure that children are properly cared for. There should be laws to protect children from violence, abuse and neglect from adults.

Article 19: I have the right to be protected from being hurt or badly treated

Celebrating Welsh Language, Heritage, and Culture at Ysgol Heol Goffa

At Ysgol Heol Goffa, the Welsh language and culture are at the heart of our school community. We are proud to announce that our commitment to promoting and celebrating the language of Wales has been recognised with the prestigious Bronze Starter Iaith Award. This achievement reflects the dedication of our staff and pupils in embedding Welsh into everyday school life.

Our celebration of Welsh identity goes far beyond the classroom. Over the years, we have enjoyed great success in the Welsh Heritage Award, showcasing our pupils' creativity and understanding of Wales' rich history and traditions. These achievements highlight our determination to keep Welsh heritage alive and thriving within our school.

We also take pride in our active involvement in local cultural events, including St David's Day celebrations in Llanelli, where our pupils represent the school with enthusiasm and pride. These experiences strengthen our links with the wider community and give our learners a sense of belonging and cultural appreciation.

In addition, our Sports Ambassador pupils play a unique role in promoting the Welsh language through sport. They deliver PE lessons in Welsh to mainstream primary pupils at a local school, demonstrating leadership, teamwork, and a commitment to sharing the language in fun and engaging ways.

At Ysgol Heol Goffa, the spoken language and vibrant culture of Wales are celebrated throughout the school. We aim to nurture pride, confidence, and a lifelong connection to Welsh heritage for every learner.



Pawb Yn Gallu - Everyone Can!

Relationship & Sex Education

RSE is a positive and protective part of the Curriculum for Wales. It plays a central role in supporting learners' rights to enjoy fulfilling, healthy and safe relationships throughout their lives. RSE is also a key part of our safeguarding role at Ysgol Heol Goffa. A rights and equity based RSE curriculum helps ensure that all learners can develop an understanding of how people's faith, beliefs, human rights and cultures are related to all aspects of RSE and how these rights can contribute to the freedom, dignity, well-being and safety of all people. Therefore, within Ysgol Heol Goffa we will discuss RSE in the context of the Rights protected by the United Nations Convention on the Rights of the Child.

RSE at Ysgol Heol Goffa will support learners to develop the knowledge, skills and values to understand how relationships and sexuality shape their lives as well as the lives of others. Learners will be equipped and empowered to seek support on issues relating to RSE and to advocate for self and others.

RSE provided must be developmentally appropriate for learners. Therefore, schools and settings must take account of a range of factors such as the learners age, knowledge and maturity and any additional learning needs. RSE at Ysgol Heol Goffa will be developmentally appropriate for each learner.

RVE and Collective Worship

Religion, Values and Ethics (RVE) at Ysgol Heol Goffa is designed to support our learners in developing a thoughtful understanding of themselves, others and the wider world. Through an inclusive and engaging curriculum, pupils explore a rich variety of beliefs, traditions and ethical perspectives, helping them to build respect, empathy and critical thinking skills. As part of our commitment to fostering spiritual development, pupils also take part in daily acts of collective worship that are inclusive, reflective and appropriate to our school community. Our approach encourages learners to reflect on their own values, understand the diverse communities around them, and develop the confidence to make responsible, informed choices. RVE at Ysgol Heol Goffa plays an important role in nurturing the personal, social and moral development of every pupil.



Communication

At Ysgol Heol Goffa, our communication strategy is designed to build pupils' confidence and independence while progressing toward our vision of becoming a Total Communication school. We provide structured support through one-to-one play-based sessions and gradually transition to collaborative activities such as cooking and games. This approach enables pupils to develop practical communication skills using core boards and devices in real-life contexts, fostering peer interaction and mutual support. By embedding these practices across the school, we aim to create an inclusive environment where every pupil can express themselves effectively and access a full range of communication methods.



Pawb Yn Gallu - Everyone Can!



Learning Environments

Each classroom is designed around the pupils in it. Many have areas for sensory regulation, quiet time, messy exploration, and play. Pupils can access the sensory room, soft-play room and the many quiet areas around the school as well as the outdoors.



Enabling Learning

At Ysgol Heol Goffa we support learners to become as independent as they can. Our staff are trained in a range of different strategies to enable learning. This includes sensory development, being a communication partners, a range of therapies and developmental milestones. We also have specialist teams to support pupils with sensory, welling and communication interventions.



Learning Experiences

Learning experiences are tailored to each individual learner. Pupils have a say in what and how they would like to learn to make sure experiences are engaging as possible. We often go on class trips to develop our independence and work on our targets. There are lots of opportunities to develop these through a 24-hour curriculum offered through the many residential trips we have each year.



Pawb Yn Gallu - Everyone Can!

Duke of Edinburgh (DofE)

The school runs a sector-leading DofE programme for learners from Bronze to Gold level, emphasizing inclusion and personal development.

Bronze expeditions included walking the Wye Valley Greenway and an overnight stay at the National Botanic Garden of Wales, fostering resilience and teamwork.

Silver expeditions involved a three-day canoeing challenge along the Llangollen Canal, including crossing the world's tallest aqueduct.

Plans for June 2026 include an innovative Gold expedition on the River Tay using inflatable rafts, designed for learners with Additional Learning Needs, promoting collaboration and independence.



Skiing

Heol Goffa School has offered skiing for over 30 years, with weekly training at Pembrey, trips abroad, and adaptive skiing opportunities.

Pupils compete nationally and internationally, including the British Winter Special Olympics in Italy, where one of our pupils won Gold and Bronze medals.

Over 20 participants currently train, with 12 skiing independently on the main slope.

Achievements include multiple medals at the West Midlands Special Olympics and outstanding success at the SOGB Winter Games, showcasing resilience, confidence, and skill development.



Therapies

We offer a range of therapies in school, including the following:

- Hydrotherapy
- Dennis the Therapy Dog
- Speech & Language
- Talkabout
- ELSA
- Physiotherapy
- Rebound Therapy
- Theraplay
- Multi-Sensory Learning
- Atmospherics
- Brick Therapy

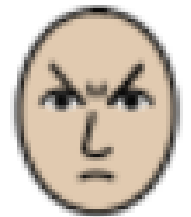


Team Teach

Team-Teach is a behaviour management strategy that focuses on de-escalation, positive behaviour support, and safe physical intervention techniques when necessary. It is approved by the Local Education Authority and the Governing body, and it is our duty of care as a school that in extreme circumstances it is necessary for staff, trained in Team Teach, to use physical intervention for the safety of all pupils. Parents will be informed immediately if any intervention has taken place and the school will always follow the correct policies and procedures. Our staff have relevant, up to date training which is updated annually.



calm



angry

Sporting Aims and Provisions

Our aim is to provide inclusive, enjoyable, and accessible sporting opportunities that promote physical health, confidence, and teamwork for all pupils.

Activities are adapted to meet individual needs, ensuring participation and success regardless of ability. We work closely with local sports providers and use specialist equipment where required, so every pupil can experience a broad and balanced range of physical education and sporting experiences.



Pawb Yn Gallu - Everyone Can!

Careers Education

Careers and work-related education is embedded into all subjects and runs from age 3-19 in Ysgol Heol Goffa to help pupils understand the link between their learning future work and the roles that others play in their lives. Through developing key skills and taking part in a range of experiences pupils develop their understanding of the world of work. Within the Senior Phase pupils participate in careers education and have the support of a specialist careers advisor from Careers Wales. Pupils have the opportunity to take part in work focused experiences as part of their curriculum and gain valuable experience in work skills within the school and out in the community.

	Secondary Phase	14 - 16	16 - 19	On leaving school
Pathway 1 Llwybr 1	Curriculum for Wales Sensory approach to teaching and learning Enabling pathways pedagogy	ASDAN: Transition Challenge Curriculum for Wales Sensory approach to teaching and learning Enabling pathways pedagogy DofE – Bronze to Silver	ASDAN: Towards independence ILS curriculum Sensory approach to teaching and learning Enabling pathways pedagogy DofE – Bronze to Gold	These pupils are likely to need social care provision on leaving school. A residential college or day care would be their likely destinations.
Pathway 2 Llwybr 2	Curriculum for Wales Sensory approach to teaching and learning Enabling pathways pedagogy	ASDAN: Transition Challenge Curriculum for Wales curriculum Sensory approach to teaching and learning Enabling pathways pedagogy	WJEC Entry 1 Certificate in Personal Progress ILS focus ILS focus Sensory approach to teaching and learning Enabling pathways pedagogy	Specialist College: Residential / Day service CCC Day services
Pathway 3 Llwybr 3	Curriculum for Wales Sensory approach to teaching and learning Enabling pathways pedagogy	WJEC Entry 1 Certificate in Personal Progress Curriculum for Wales curriculum Sensory approach to teaching and learning Enabling pathways pedagogy	WJEC Entry 1 Diploma in Personal Progress ILS focus Sensory approach to teaching and learning Enabling pathways pedagogy	Specialist College: Residential / Day service CCC Day services Local college – possible option
Pathway 4 Llwybr 4	Curriculum for Wales curriculum Enabling pathways pedagogy	WJEC Entry 2 Certificate (Pathways) WJEC Entry 2 Award Pathways Curriculum for Wales curriculum Enabling pathways pedagogy	WJEC Entry 2 Diploma (Pathways) WJEC Entry 2 Award or Certificate Pathways (pupil choice dependent) Curriculum for Wales curriculum Enabling pathways pedagogy ILS focus	Local college CCC Day services Bespoke package Supported Employment
Pathway 5 Llwybr 5	Curriculum for Wales Enabling pathways pedagogy	WJEC Entry 3 Certificate (Pathways) WJEC Entry 3 Award Pathways Curriculum for Wales curriculum Enabling pathways pedagogy	WJEC Entry 3 Diploma (Pathways) WJEC Entry 3 Award or Certificate Pathways (pupil choice dependent) Curriculum for Wales curriculum Enabling pathways pedagogy ILS focus	Local College Employment

Pupils in the senior phase follow a pathway that prepares them for life after Ysgol Heol Goffa, this might be college, day services, a mix of both, or a supported work placement.

Transition and Support

The Transition Roadshow has been a cornerstone event for many years, creating strong connections with a wide range of agencies that provide valuable support and opportunities for our pupils throughout the year. While its primary aim is to share information with pupils and parents of Ysgol Heol Goffa, it also welcomes learners from all ALN schools and units across Carmarthenshire, ensuring inclusive access to guidance during what can often be a challenging transition period.

To make support even more accessible, we introduced **Caffi Camu Ymlaen**—a relaxed, informal coffee morning where individual agencies meet with parents and carers in a discreet setting. This approach has been particularly successful for families seeking advice on financial and benefit matters, allowing them to build confidence and arrange further appointments in a comfortable environment.



Caffi Camu Ymlaen
@ Ysgol Heol Goffa Senior School
9:30am – 11:30am

Stepping forward café is a place for parents, carers and families to come together and find out more about what is available after their young person leaves Ysgol Heol Goffa.

It's a place to share experiences, ask questions and make friends.

Here are our upcoming events.....

- 7th November – Meet and greet with past parents sharing their journeys post Heol Goffa
- 28th November – Careers Wales and 0-25 Disability Team
- 5th December – Christmas Craft Session

Colleg Sir Gar?
Specialist college?
Day services?
Supported Activities?
Assisted living?



YSGOL
HEOL
GOFFA

TRANSITION ROADSHOW

May 14th 2025
Drop in between 10am and 1.30 pm
Ysgol Heol Goffa Llanelli
For further details please
contact the school on 01554
759465
Lynnda.evans@heolgoffa.ysgolccc.cymru



The event is aimed to provide young people age 14-19 who have learning difficulties/other support needs to find out what support may be available to them as they prepare to leave school. There will be representatives from the world of work/colleges/volunteering opportunities health and wellbeing. The event will be held in the Senior School building next down from the main school, SA15 3LS.

Medical Issues

We follow strict guidance from the local authority and Welsh Government as set out in the Welsh Government document Supporting pupils with Healthcare Needs. The school has access to a named off-site school nurse employed by the local health board. Support and training are received from the Community Children's nurses for any child specific medical needs. Qualified First Aid staff deal with illness and injuries occurring during the school day. Parents will be notified if a pupil becomes unwell or is involved in an accident or incident requiring medical attention.

Is your Child Unwell?

The health and wellbeing of our young is a priority, but we know infections are common in their early years, however for most the risk of severe infection is low. Infections can be acquired within various settings whether it is the home environment or the community. Childcare and educational settings, where there is exposure to many different people are one such community setting.

Look here for advice and guidance on exclusion and A-Z of infections:

[Microsoft Word - Periods to Keep Individuals Away from Settings 16.04.2018 FINAL ENGLISH.doc](#)

Medication in school

Medication can only be given in school if written parental and headteacher consent has been obtained. Medication should be in the original container with the pharmacy label attached. Further information can be found in the Administering Medication in School policy on the website: [Ysgol Heol Goffa - Policies](#)

Keep us up to date

We ask all parents to complete a Medical Details form every September to ensure we have the most up to date information for the pupils. Parents are asked to notify the school if there are any changes to the pupil's medical needs during the school year.

Attendance

Parents are asked to ensure that their children attend school regularly. An explanatory email, Class Dojo message or a telephone call made to the school on the first day of any/all pupil absences. In line with a new Welsh Government directive on pupils' attendance at school, the Headteacher only may authorise requests for pupils to be removed from school during term time for the purpose of going on a family holiday. This authorisation may be given if the request complies with the 'exceptional circumstances' criteria as laid down by the Welsh Government. Should parents/carers wish to take their child on holiday during term time then they are required to complete an online form – application for time off during term time. This link is available on the school website: [Heol Goffa Request For Time Off for Pupils 25-26](#) .

Please remember that any absence from school (even authorized absences such as medical appointments or illness) will count against your child's overall attendance percentage. The Local Authority has to be notified as soon as any pupils' attendance falls below 85%. The school is also required to report any prolonged unauthorized absences. More information is available in our Attendance Policy on the school website: [Ysgol Heol Goffa - Policies](#)

Term Dates

Term	Term begins	Half Term	Term Ends
Summer 2025	Monday 28 April	Monday 26 May – Friday 30 May	Monday 21 July
Autumn 2025	Tuesday 2 September	Monday 27 October to Friday 31 October	Friday 19 December
Spring 2026	Monday 5 January	Monday 16 February to Friday 20 February	Friday 27 March
Summer 2026	Monday 13 April	Monday 25 May to Friday 29 May	Monday 20 July
Autumn 2026	Wednesday 2 September	Monday 26 October to Friday 30 October	Friday 18 December
Spring 2027	Monday 4 January	Monday 8 February to Friday 12 February	Friday 19 March
Summer 2027	Monday 5 April	Monday 31 May to Friday 4 June	Tuesday 20 July

Designated INSET Days

- ✓ Monday 1 September 2025
- ✓ Tuesday 1 September 2026

Security and Safety Procedures

All Visitors to the school must register at the reception. The school operates on a door swipe and keypad system, ensuring a safe environment for all learners. No visitors can access the main school building without signing in electronically. ID may be requested before a Visitors Pass is issued which also contains safeguarding information on the reverse.

A fire alarm system is operational and is tested weekly.

Staff cars are parked in the staff car park and yellow zigzag lines are painted immediately outside the school. School Transport are managed whilst on the school site in accordance with our traffic management risk assessment when dropping or collecting pupils from our school.

We ask that all parents/guardians not to drive onto the school premises during these times 8am – 9am and 2pm-3pm to ensure the safety of our children arriving and leaving the school premises.

Please also be mindful of residents in close proximity to the school.

Pawb Yn Gallu - Everyone Can!



Links with the Community

At Heol Goffa, we believe that strong community links enrich the lives of our pupils and provide vital support for families. Through partnerships with local businesses, charities, and professional agencies, our pupils access unique opportunities such as work experience, cookery sessions, volunteering, and intergenerational projects. These experiences build confidence, independence, and real-world skills.

We also work closely with organisations like Foothold Cymru, Carers Trust, and Investors in Carers to ensure families receive guidance and resources, from financial advice to health and wellbeing support. Regular coffee mornings, Health and Care Roadshow, the Transition Roadshow, and parent training sessions create spaces for sharing information and building trust. Our strong ties with local businesses, community groups such as Llanelli Rotary, and volunteers enable fundraising, events, and practical help, ensuring every pupil benefits from a network that truly cares. As we look forward to our new school, these partnerships will continue to grow—keeping the heart of our community at the centre of everything we do.

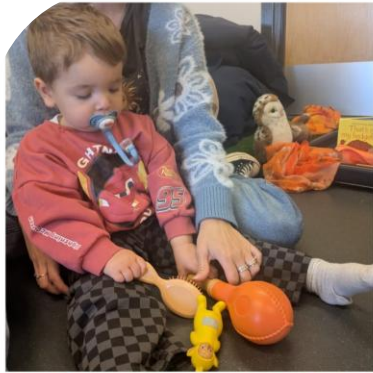
Pawb Yn Gallu - Everyone Can!



Mini Bees

Every month we open up our sensory room for little ones and their families. This nurturing space is specially designed for babies aged 0–3 with ALN and complex medical needs. From sensory play to emotional support, Mini Bees is a lifeline for families.

Together, we grow, connect, and celebrate every milestone.



Parent/Carer Involvement

At Ysgol Heol Goffa we promote parental partnerships to maximise pupil learning, progression and enjoyment of school and prepare them for important transitions at different phases of school life.

We have an open-door policy and value and welcome discussion with parents and carers on all aspects of school life and support with home life where we can too. We believe in a holistic approach, where all who support our young people are cared for too.

ClassDojo is used to inform parents of school events, share celebrations and, also to pass on important information.

We welcome our parents into school to participate in and celebrate special events and achievements throughout the year.

The parent staff association (PSA) plan and organise events throughout the academic year to raise money and bring families together. For more information on joining our PSA, please contact the school.



Pawb Yn Gallu - Everyone Can!



Home School Agreement

The purpose of this agreement is to create a positive relationship between parents/carers and school and to commit both parties to the common aim of providing a better education and a happier future for the young people concerned.

The school will:

- Invite parents/carers to school prior to admission, to share information, alleviate concerns and collate available information. Parents/carers and the family will also be shown all the facilities and given access to all areas of the school.
- On admission, give parents/carers the name of the class teacher and the support staff involved with their child.
- Within one term of admission, assess the child educationally and behaviourally. Parents/carers will be asked to work in collaboration to set objectives for their child so that IDP Outcomes can be reviewed, updated or written and implemented.
- Review each young person's provision annually and invite parents/carers to contribute to this Person-Centred Review in writing and in person.
- Direct parents/carers to the School Prospectus and more details on any policies they may require.
- Keep parents/carers informed of school activities and other issues.
- Reassure the parents/carers that every effort will be made to ensure their child's safety.
- Encourage parents/carers to visit school by prior arrangement but to use Class Dojo and office number to contact with any concerns if and when they arise.
- Will offer each pupil full access to the Curriculum for Wales and appropriate qualification pathways, providing suitable attention to their individual educational and behavioural needs.

Parents/Carers will:

- Give due consideration to their child's placement at the school and be fully supportive of the school in the management of their child.
- Ensure that their child attends school regularly and notify the school in the event of any absences.
- Communicate regularly with the school if there are problems at home or at school.
- Attend meetings within the school at the mutually agreed time.
 - Attend the Person-Centred Review meetings with teachers and respond in writing to any requests for information in preparation for the meetings.
 - Support mutually agreed outcomes and targets for their child.
- Communicate their concerns directly and promptly to the school.
- Help their child at home by continuing aspects of their education as agreed with the class teacher

PLEASE NOTE: PUPILS ARE NOT ALLOWED TO BRING MOBILE PHONES TO SCHOOL AND PUPILS ARE NOT ALLOWED TO BRING VAPES INTO SCHOOL



Pawb Yn Gallu – Everyone Can!

